

Catch up programme Warwick Road Primary School

SUMMARY INFORMATION

Academic Year	2021/22	Total number of pupils	344 (from YR to Y6)
Cost per pupil	n/a	Total catch-up budget b/f	£4,366
Catch-up funding leader	Shamsa Qureshi	GB member responsible	Khalil Patel

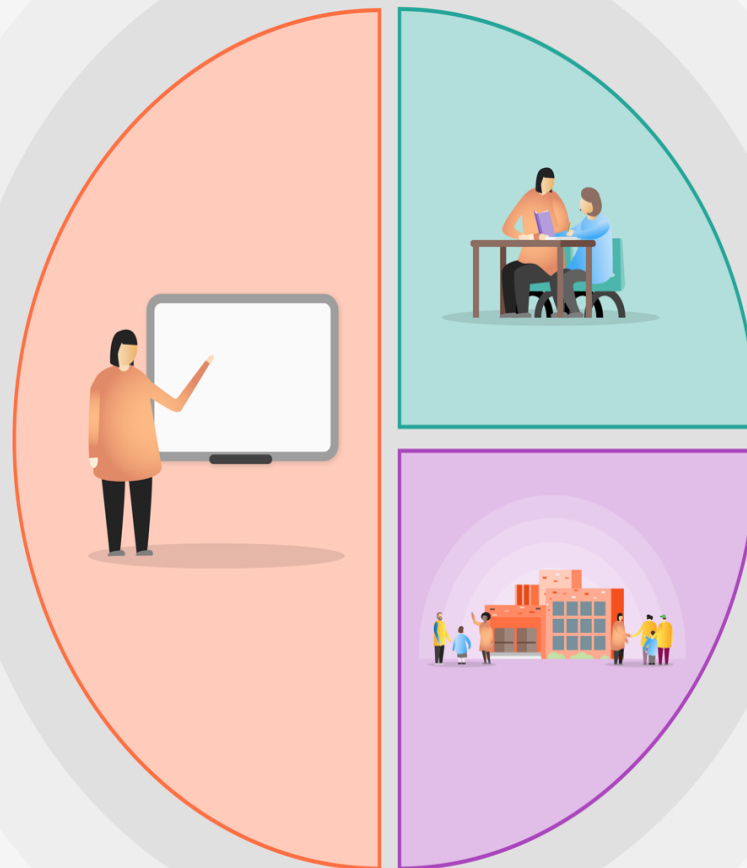
Context / foreword

The government have provided 'catch-up' funding to be used for children to catch up on the learning they have missed. Following research and the EEF document 'COVID-19 SUPPORT GUIDE FOR SCHOOLS', this strategy sets out the school's plan to provide the necessary resources and approaches to allow our children to settle back into school and accelerate their learning in order to 'narrow the gaps'.

This is the underspent amount from 2020/21 (£4,366), which has been fully spent during the autumn term.

1 Teaching

- Maintain high level Quality First Teaching (QFT) – support in place for NQTs and RQTs
- A broad and engaging rich curriculum that solidifies new knowledge acquisition
- Regular staff CPD on mental health and wellbeing.
- Purchase of resources to facilitate both in class and home learning
- Teachers model use of key strategies for identifying emotions and employing self-regulation strategies (CPD delivered to staff – Inset day in September)
- A staged approach to catching up on learning:
 - Autumn 1 – assess children on entry in September – use the first ½ of the autumn term to catch up on missed learning from the summer
 - Autumn 2 – first two weeks used to clarify any misconceptions from previous learning
- Where required English and maths lessons are doubled up, to ensure full coverage of the autumn learning
- Google Classroom used as a platform for learning over Christmas and in a future lockdown. All children and adults taught how to use the platform effectively – videos sent out to parents
- Home learning packs sent out with Power Maths workbooks, exercise books and any other resources the children might need in the event of a lockdown
- Face-to-face teaching for those children highlighted as requiring a place in school; home learning and face-to-face to teaching to take place at the same time
- Feedback on tasks given; in class, face-to-face, online either privately or collectively
- Headteacher is clear with families as to the requirements of home learning
- Teachers must have regular contact for those children accessing learning at home
- Maths has been highlighted as a key area for Autumn 1
- Use of assessment data to highlight area of need for catch-up



2 Targeted academic support

- Same-day in-class intervention
- Teacher-led targeted group teaching for some pupils
- Specific intervention programmes led by both Teachers and Teaching Assistants.
- Pastoral staff provide small group and 1:1 support to assist children in transition into school
- Pastoral support available for those children that have suffered loss or bereavement
- 30 children to access 8 hours of intensive maths tuition from 1-1 tuition
- Continue with 1-1 tuition from either NTP or local providers

3 Wider strategies

- Lessons on identifying emotions and self-regulation
- Provide technical support for parents to access Parent Hub or Google Classroom
- Ensure pastoral contact home for disadvantaged children and identify barriers to engagement due to technology or a lack of other forms of support – apply for laptops and regular calls home to parents
- Office staff to provide support to parents struggling with ICT or accessing online learning

ONGOING ACTIVITY LOG 21/22 Catch-up Grant Funding – unspent amount brought forward

Date	What has been started/completed from the implementation activities?	What impact measures can you report to date from the implementation outcomes?	Do you need to change/adapt anything in your plan? (develop, change, maintain)	Are there any budget implications for this?
September	Booster classes for year 3/6 pupils New reading books Power Maths books			Additional staffing and contributions to breakfast food £720 Additional reading books £89 Maths books £66
October				
November	Power Maths, Mathletics and White Rose Maths subscriptions have been renewed to facilitate both classroom practice and home/online learning	Teacher workload is eased with the purchase of subscriptions – the resources are being used effectively for: <ul style="list-style-type: none"> • Whole class teaching • Pre- and post-interventions • Pre-planned interventions using PM materials from previous lessons, etc. Children are fully engaged with the resources New resources allows for targeted group work with classes		Purchase of Maths online subscriptions £3,441
December	Google classrooms licence renewed			£50

Grant Funding Overview

Tiered Support Areas	Budget Available	Autumn Term 21/22	Final Spend
Brought forward from 2021/2022	£4,366		
1. Teaching			
<i>Online subscription - Power of Maths</i>		1386	1386
<i>Online subscriptions – White Rose Maths</i>		160	160
<i>Online domain name Google for home learning</i>		50	50
<i>Online subscription - Mathletics</i>		1895	1895
2. Targeted Academic Support			
Breakfast club and catch up lessons for year 6 pupils			
- <i>Additional breakfast support worker costs (Sept- Dec)</i>		600	
- <i>Breakfast food (contribution to the food costs)</i>		120	720
3. Wider Strategies			
Literacy resources – EYFS – Y6		89	89
Maths resources (Power of Maths)		66	66
Total Expenditure			£4,366